

*Pick-up*

**ELK RUN**

*Drop-off*

**PROCEDURES**

Not a Drop-Off or Pick-Up. Faculty Parking Only. No Students at any time

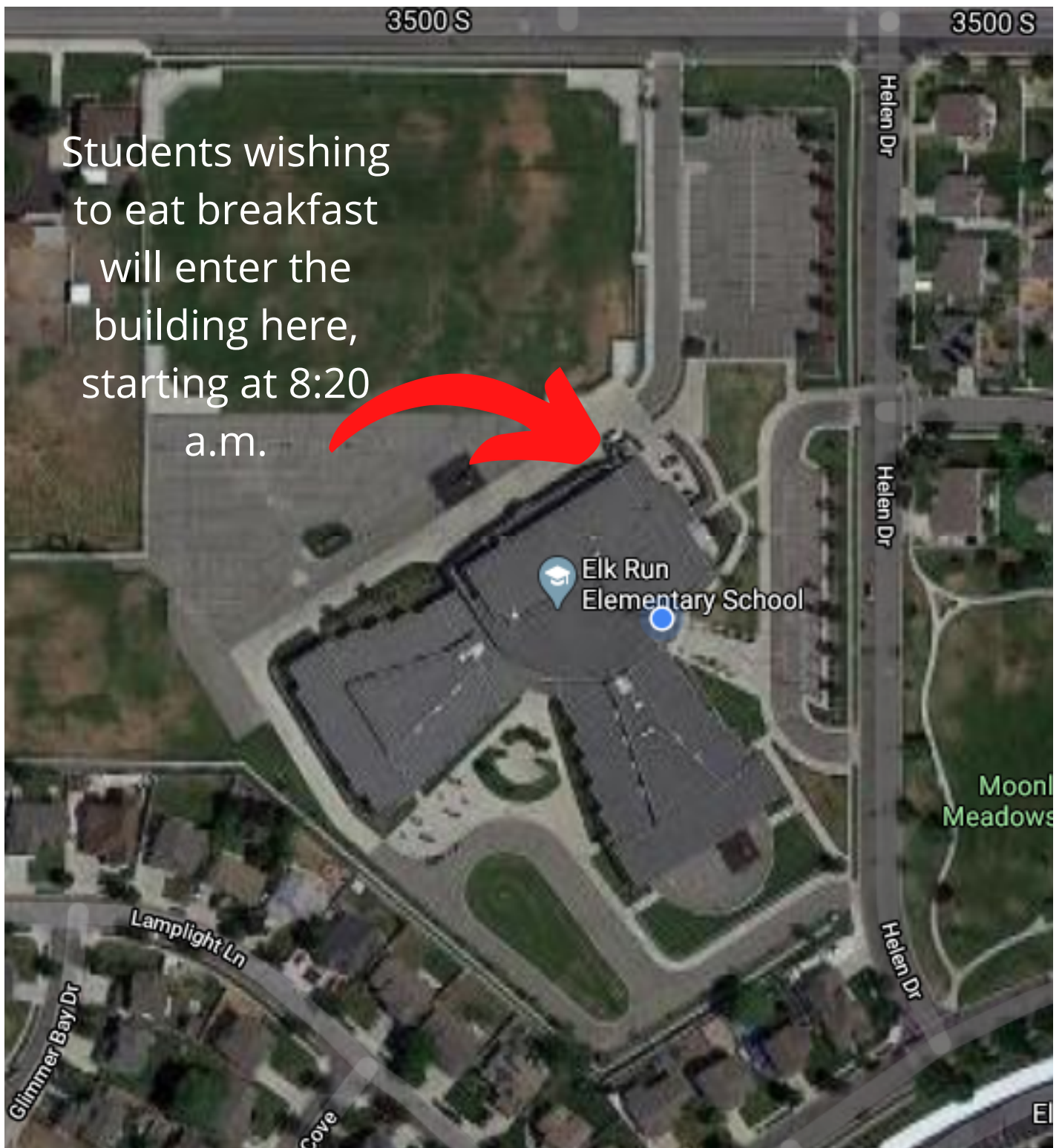
Day Care, Kindergarten, and School buses ONLY



Please use this area for Drop-off and Pick-up. Pull forward as far as possible before stopping to drop students off.

# Students eating Breakfast

Students wishing to eat breakfast will enter the building here, starting at 8:20 a.m.



# First Graders



First  
Graders  
line up  
IN the  
fenced  
area

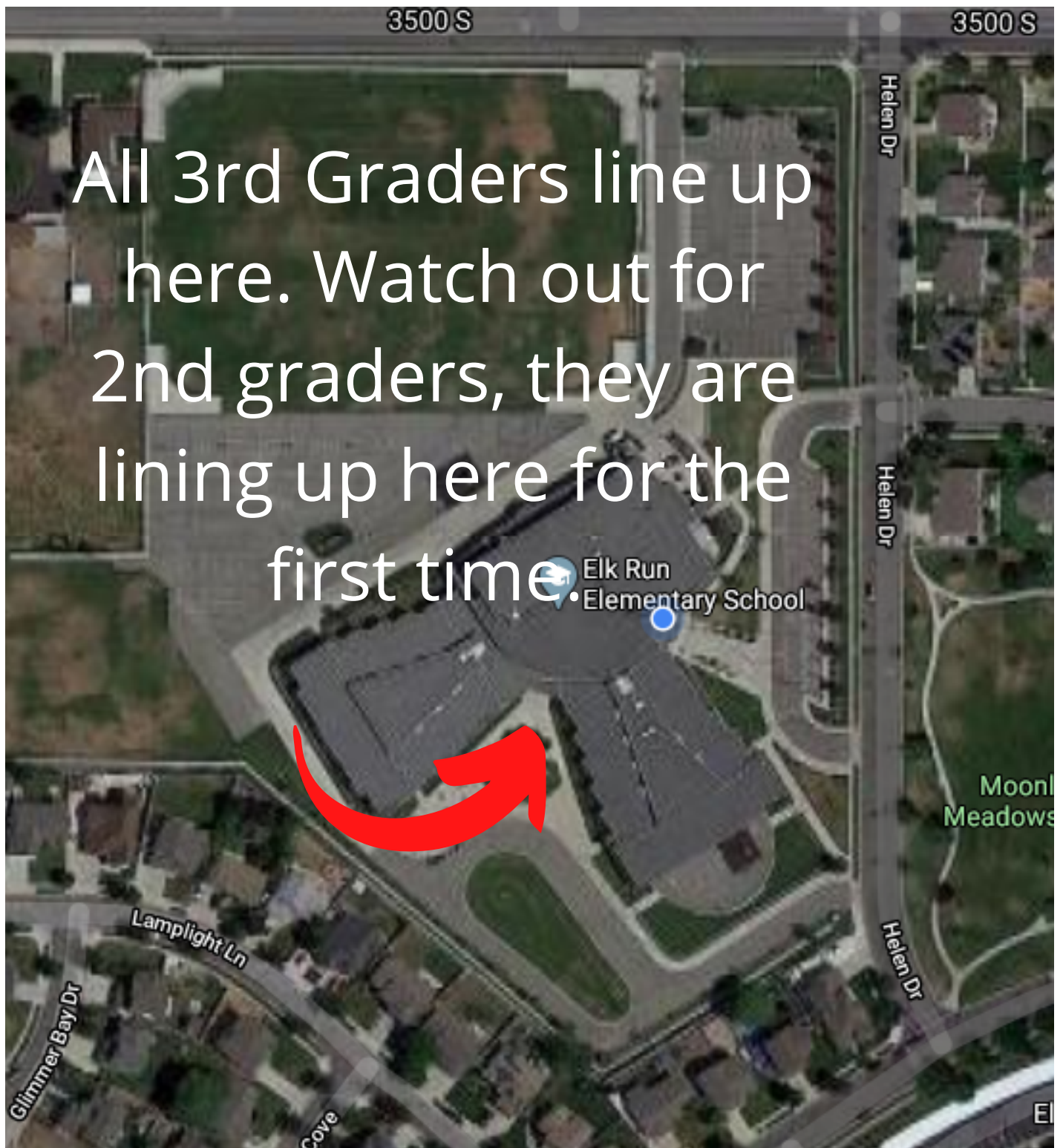
If you arrive at school before 8:20 you need to sit on your line. There is no supervision before 8:20.

# 2nd Graders



If you arrive at school before 8:20 you need to sit on your line. There is no supervision before 8:20.

# 3rd Graders



If you arrive at school before 8:20 you need to sit on your line. There is no supervision before 8:20.

# 4th Graders



If you arrive at school before 8:20 you need to sit on your line. There is no supervision before 8:20.

# 5th Graders



If you arrive at school before 8:20 you need to sit on your line. There is no supervision before 8:20.

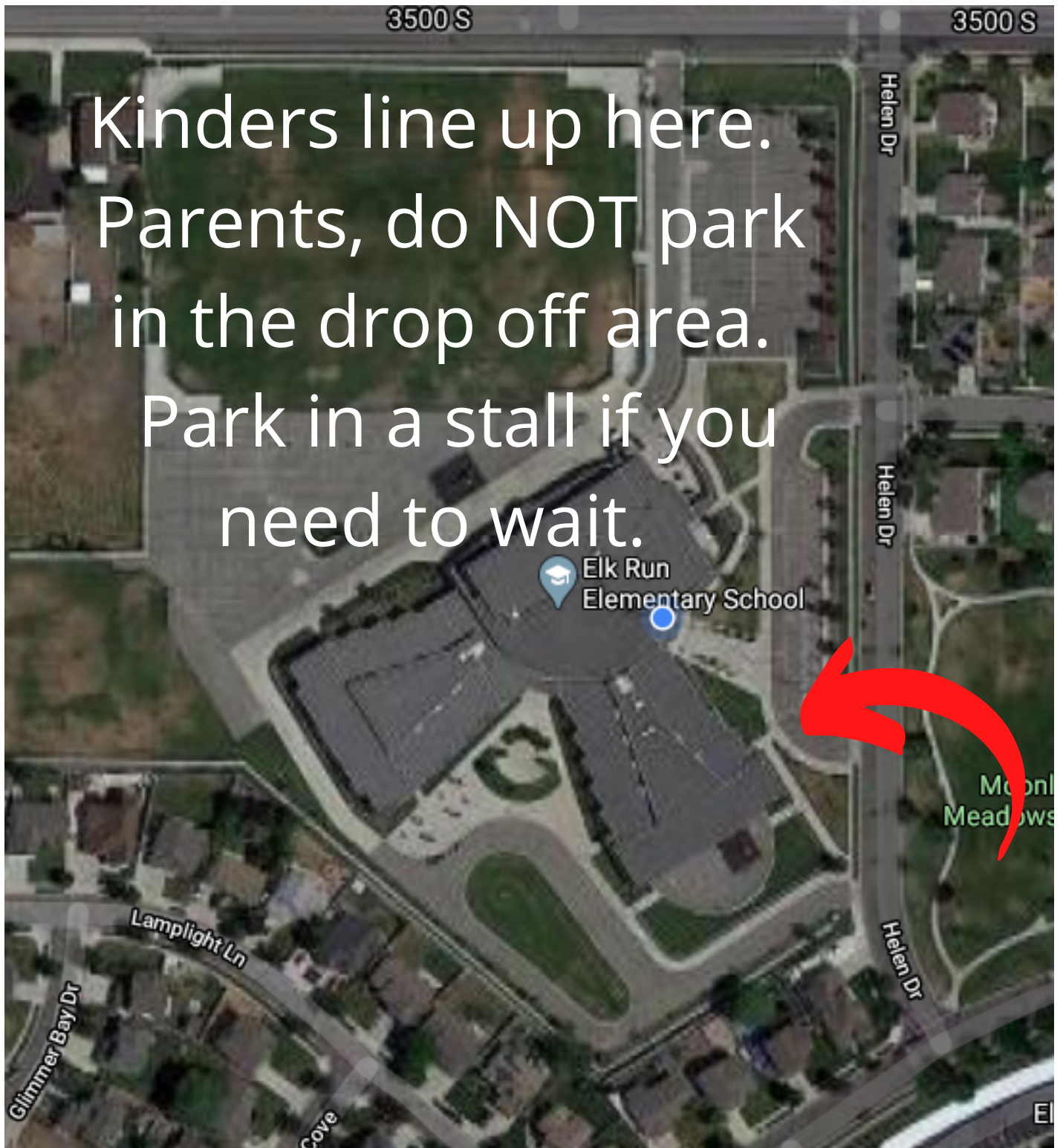


# 6th Graders



If you arrive at school before 8:20 you need to sit on your line. There is no supervision before 8:20.

# Kindergarteners

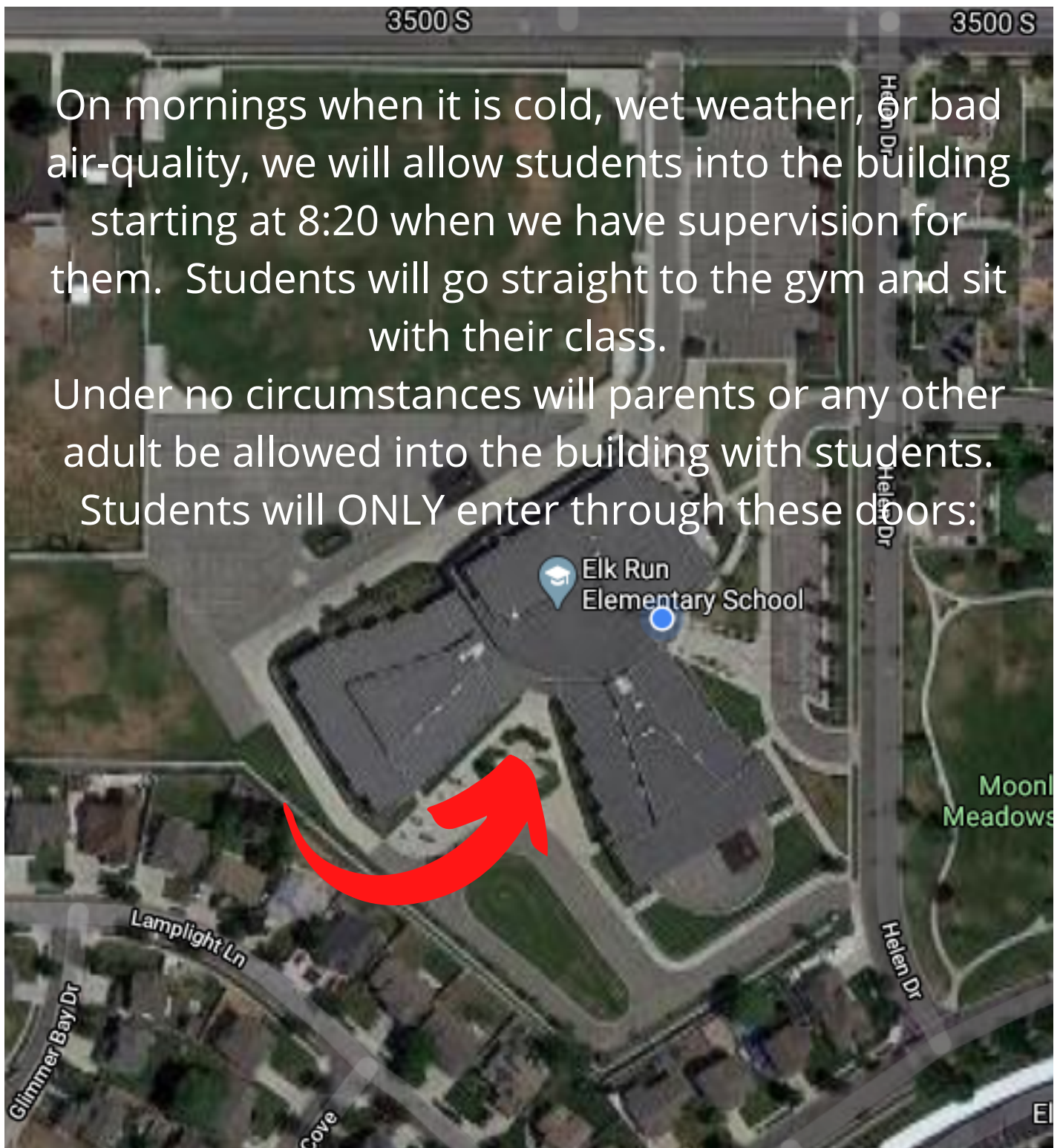


If you arrive at school before 8:20 you need to sit on your line. There is no supervision before 8:20.

# Inside Mornings

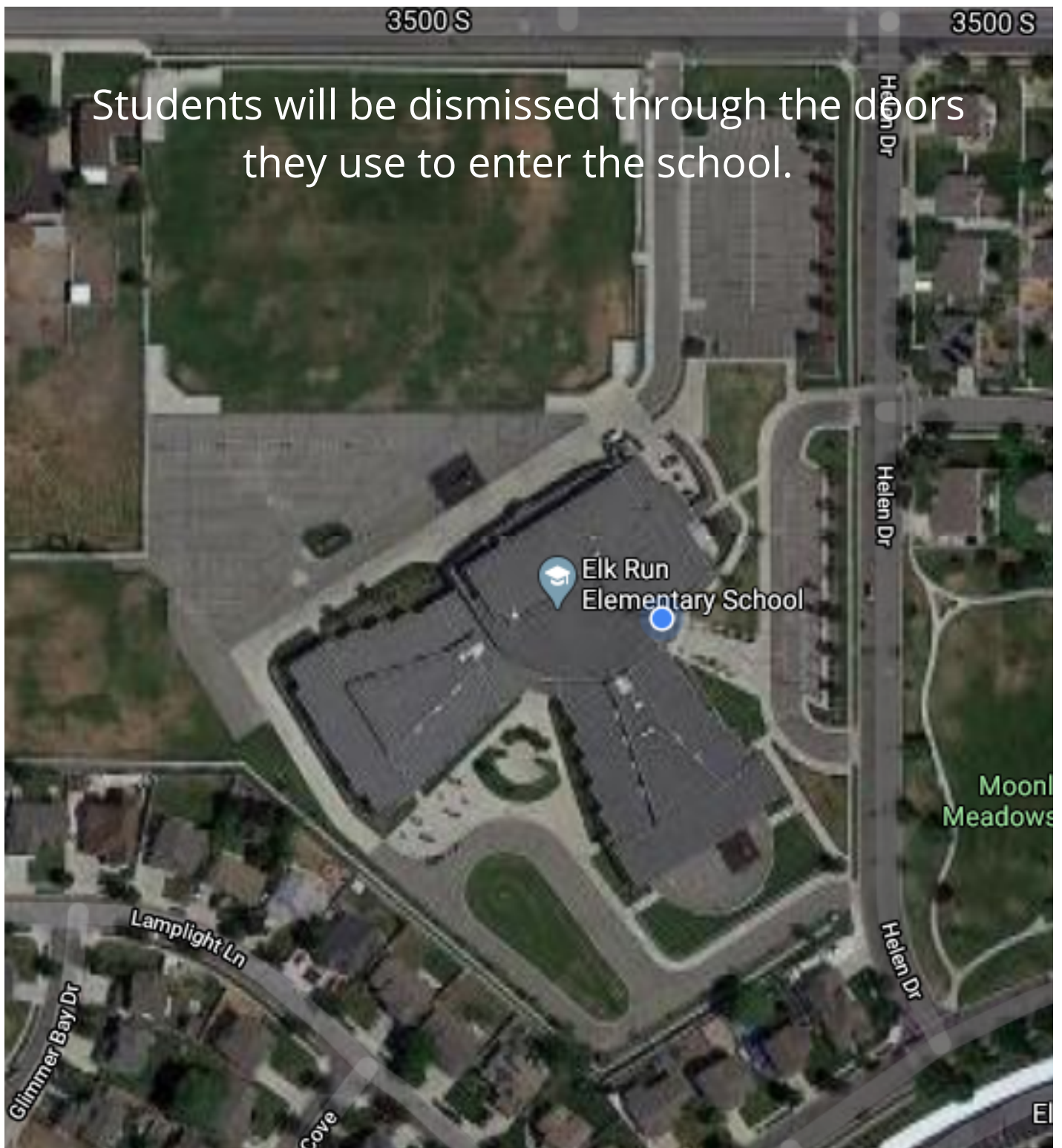
On mornings when it is cold, wet weather, or bad air-quality, we will allow students into the building starting at 8:20 when we have supervision for them. Students will go straight to the gym and sit with their class.

Under no circumstances will parents or any other adult be allowed into the building with students. Students will ONLY enter through these doors:



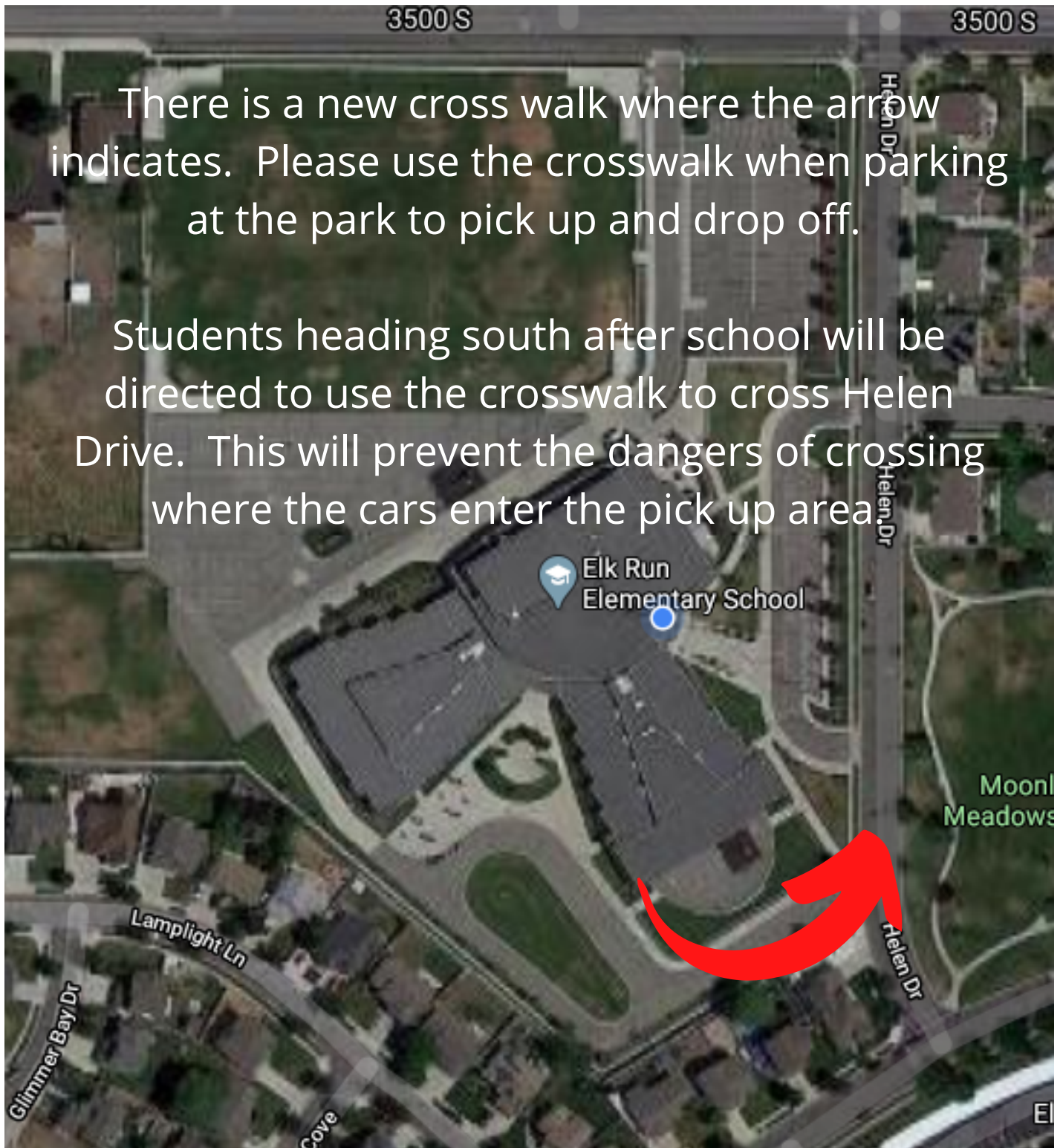
If you arrive at school before 8:20 you need to sit on your line. There is no supervision before 8:20.

# Dismissal



Please only right turn into our pick-up loop.  
This helps with traffic and student safety.

# Dismissal



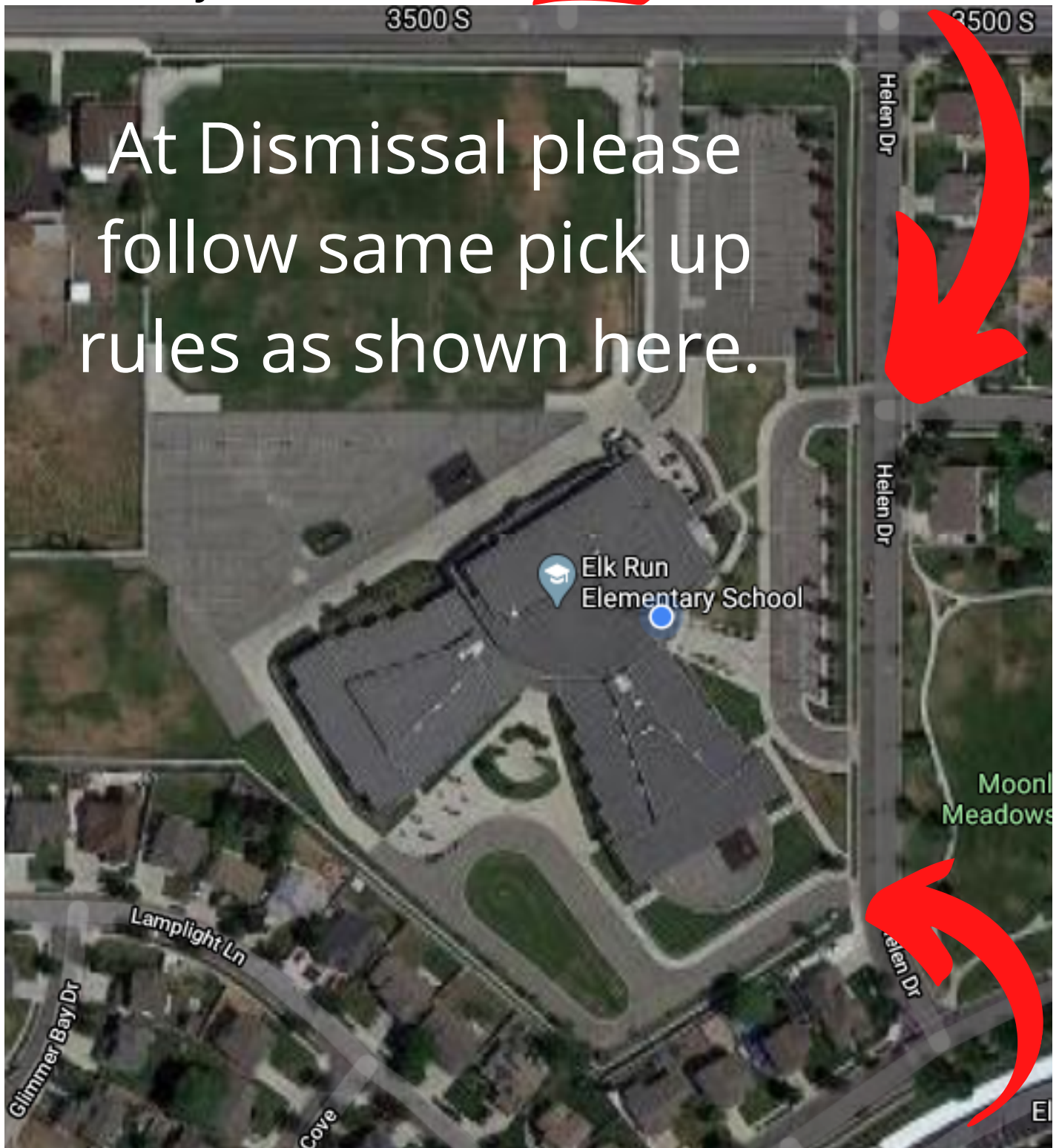
There is a new cross walk where the arrow indicates. Please use the crosswalk when parking at the park to pick up and drop off.

Students heading south after school will be directed to use the crosswalk to cross Helen Drive. This will prevent the dangers of crossing where the cars enter the pick up area.

New Crosswalk!! DO NOT Jaywalk across Helen Drive.

Not a Drop-Off or Pick-Up. Faculty Parking Only. No Students at any time

Day Care and School buses ONLY



At Dismissal please follow same pick up rules as shown here.

Please use this area for Drop-off and Pick-up