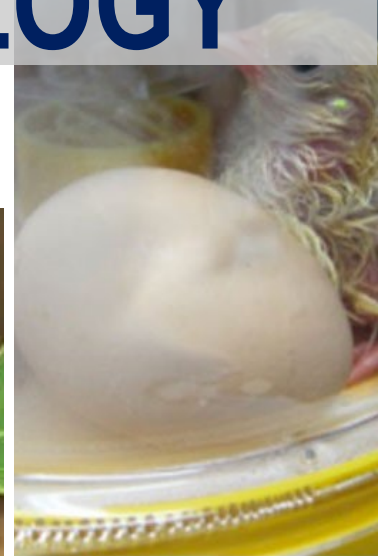
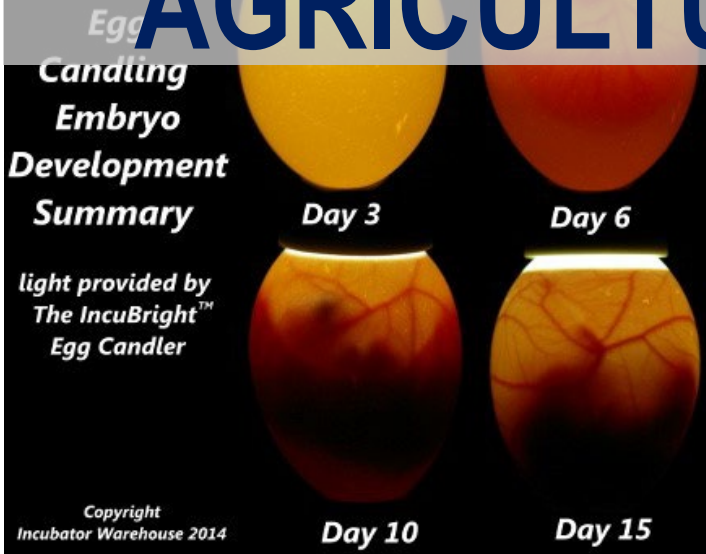


# AGRICULTURE BIOLOGY



***Agriculture Biology is the study of plant and animal life that have been domesticated for production.***

This course is designed for students interested in agriculture, plant, and animal life and who are looking to fulfill their biology credit.

## Topics Covered

- Cells (the structure and function of life)
- Genetics
- Evolutionary Change
- Plant
- Animals

## Career Paths

- Farm Management
- Field Botanist
- Veterinarian
- Genetics Researcher
- Soil Scientist
- Range Manager
- Molecular Biologist



**To Register**, submit a GTI Application (signed by parent).

Visit the GTI website or contact your school counselor for an application.

***This class counts as Biology Core Science credit***

Granite School District does not discriminate on the basis of race, color, sex, pregnancy, religion, national origin, marital status, disability, sexual orientation, gender identity, age, or any other legally protected classification in educational programs, activities, or access to facilities.



## Location

Granite Technical Institute  
2500 S. State St.

## Transportation

School bus available to & from GTI

## Grade Level

9<sup>th</sup>- 12<sup>th</sup> grades

## Pre-Requisites

Taken with Aquaculture

## Class Times

2-period Block with Aquaculture  
Weekly trips to Wheeler Farm

## Credits

1.0 CTE, Elective, Third Science credit

## Length

Year

## Fees

Lab fees required.

Fee waivers available for qualifying students at their home high school.