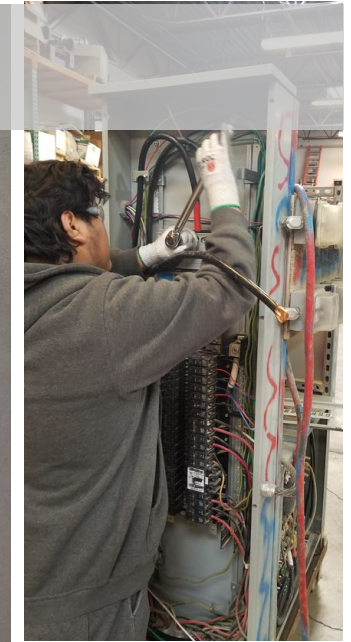


ELECTRICAL TRADES



Students will have the opportunity to work with a licensed Electrician and do both residential and light commercial electrical installations.

Internships are available the beginning of 4th quarter through several local electrical shops. These local shops also offer several paid summer internships for students between Junior and Senior year.

Students also have the opportunity to receive 1st semester 1st year apprenticeship credit through SLCC

Topics Covered

- Current National electrical code
- Residential electrical wiring
- Ohms Law
- Power and hand tools
- Conduit bending
- Blueprint reading

Career Paths

- Electrician
- Electrical Engineer
- Electrical Contractor



To Register, submit a GTI Application (signed by parent).

Visit the GTI website or contact your school counselor for an application.

This class offers concurrent enrollment credit through SLCC

Granite School District does not discriminate on the basis of race, color, sex, pregnancy, religion, national origin, marital status, disability, sexual orientation, gender identity, age, or any other legally protected classification in educational programs, activities, or access to facilities.



Location

Granite Technical Institute
2500 S. State St.

Transportation

School bus available to & from GTI

Grade Level

10th -12th grades
11th-12th grades Concurrent Enrollment

Pre-Requisites

Construction Trades recommended
Concurrent class needs Math ACT score of 20 or placement test

Class Times

2-period Block

Credits

2.0 CTE, 5 College credits (SLCC) ELI 1110

Length

Year

Fees

Lab fees required.
Fee waivers available for qualifying students at their home high school.

Certification

Apprenticeship program available for students 17 or older