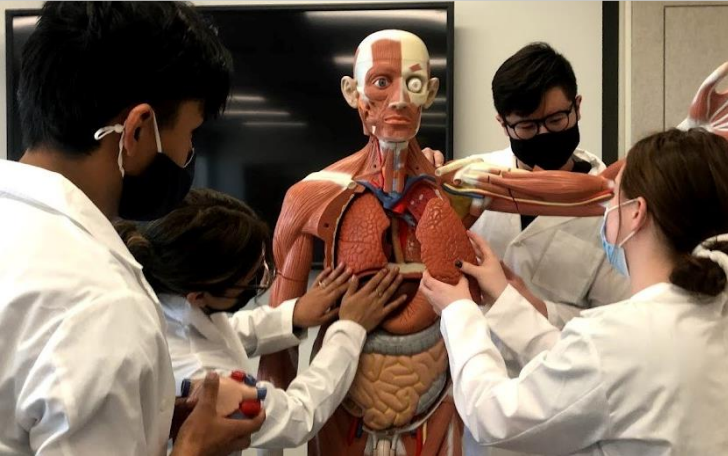


MEDICAL ANATOMY & PHYSIOLOGY



Medical Anatomy and Physiology is a college preparatory class for those students wishing to enter medicine. The course consists of twelve units that cover all the major body systems as well as histology and biochemistry.

Topics Covered

- Skeletal System
- Muscular System
- Nervous System
- Cardiovascular System
- Endocrine System
- Respiratory System
- Digestive System
- Integumentary System
- Biochemistry



To Register, submit a GTI Application (signed by parent).

Visit the GTI website or contact your school counselor for an application.

This course offers college credit through Weber

Granite School District does not discriminate on the basis of race, color, sex, pregnancy, religion, national origin, marital status, disability, sexual orientation, gender identity, age, or any other legally protected classification in educational programs, activities, or access to facilities.



Location

Granite Technical Institute
2500 S. State St.

Transportation

School bus available to & from GTI

Grade Level

10th -12th grades

Pre-Requisites

None

Class Times

2-period Block

Credits

2.00 credit, elective, College credit
Case Studies in Health Science
(HTHS 1120) Weber

Length

Year

Fees

None