



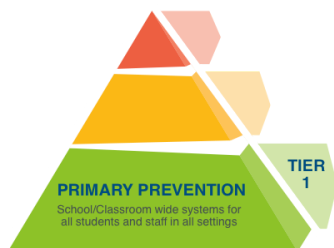
Hillsdale Elementary

2023 - 2024 School Behavior Plan Summary

The purpose of this plan is to communicate our school's efforts to one, build and maintain a culture of positive student behavior; and two, to address the serious issues of bullying, suicide, and substance abuse prevention. This plan addresses state requirements found in: § 53G-9-602, § 53G-10-407, R277-400-8, R277-609-2, R277-622-3, and R277-609-4.

District Commitment: Every school in Granite School District will offer a learning environment where safety, responsibility, and respect prevail and where every student receives support toward achieving academic goals and personal aspirations.

Section 1: Schoolwide Tier I Positive Behavior Expectations



Hillsdale Elementary uses Positive Behavior Interventions and Supports (PBIS), which is a district and state supported behavior program. As part of our PBIS we proactively teach and reinforce these behavioral expectations to all students and staff and throughout all areas of the school.

Have and Show Respect

Act as a Good Friend

Will Follow Directions the First Time Given

KYHFOOTY

Stops, Walks, and Talks to Solve Problems

How/when expectations are taught	How expectations are reinforced	How behaviors are corrected
Classroom and hallway posters School wide walking expectation field trip Social skills and dispositions lessons with social worker Graduate of Granite teaching Class meetings Playworks class game times	Class Dojo Points Hawk Tickets Recess Hawk Tickets Recess drawing Student of the month Limo Lunch Classroom incentives	1. Verbal warning/ redirection 2. Lose Dojo Point 3. Think Time 4. Parent contact 5. Referral to administration 6. Behavior intervention

Pro-social activities or programs that provide a positive extracurricular involvement for students:

Safety Patrol, Student leadership programs, Junior Coach Program, After school programs

Section 2: Bullying Prevention



Our school is committed to protecting students from all forms of bullying including cyber-bullying, hazing, and retaliation. Our students have the right to a safe, caring, and respectful learning environment in which all students can realize their maximum potential and fully engage in the learning process. Our goal is to raise awareness of bullying as an unacceptable form of behavior (*prevention*) and to have measures in place to deal with bullying behavior when it occurs (*intervention*).

Bullying Defined	Resources
Bullying includes these three components and can include bullying , cyber-bullying , hazing , and retaliation : <ol style="list-style-type: none">1. Unwanted or aggressive behavior involving a real or perceived power imbalance2. Intent to hurt, intimidate, humiliate, or cause harm - AND-3. The behavior is repeated or has significant potential to be repeated -OR- a single egregious event	District Bully Prevention Information & Resources What happens when bullying is reported? Stop Bullying Now Granite District Bullying and Hazing Policy SafeUT

Teaching, reinforcing, and correcting our positive behavior expectations described in Section 1 are key components of our bully prevention plan. In addition to the schoolwide expectations, we have specific bully prevention practices that address bullying incidents and give support for students who have been targeted. Following is a summary of those practices:

How bullying prevention is taught	Steps taken when bullying is reported	School supports for targeted students
Stop, Walk, and Talk training Social skills and dispositions lessons Be an Ally presentations	<ol style="list-style-type: none">1. Administration notified2. Incident investigation3. Meet with students4. Parents contacted5. Next steps are decided.	<ol style="list-style-type: none">1. Structured recess zones2. Social worker referral3. Stop, Walk, and Talk reteaching4. School Service

All reported incidents of bullying are taken seriously and are investigated by or in collaboration with a school administrator following the steps listed above. Incidents are documented on Educator's Handbook (our school's behavior tracking system) and/or on Discovery (our district's student information system).

When a teacher or other school personnel becomes aware of a bullying incident this information is promptly given to school administration. Additionally, we encourage anybody who is targeted by bullying, witnesses bullying, or is aware of bullying occurring to report it to a school administrator, a school counselor/teacher, other trusted adult, or by using the SafeUT app.

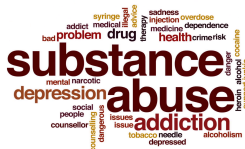
Section 3: Suicide Prevention



Understanding the issues concerning suicide and mental health is an important way to take part in suicide prevention, help others in crisis, and change the conversation around suicide. In our school, age appropriate curriculum is used to teach students how to identify risk factors and warning signs of suicide, and how to help if they or someone they know may be thinking of self-harm. Reports of suicidal ideation are reported to administration to provide supports and communication to student and family. The Student Support referral and documentation process is followed.

How and when our school teaches suicide awareness	How our school responds to reports of suicidal ideation
Class meetings School wide social skills and dispositions lessons SafeUT presentations Targeted groups with social worker/psychologist	Referral to school social worker or psychologist Parents contacted Student support form List of outside resources given to parent District supports

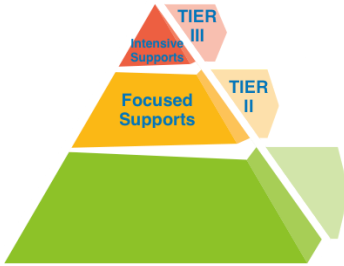
Section 4: Substance Abuse Prevention



The Granite School District and Hillsdale Elementary are committed to the prevention of drug, alcohol, tobacco, and E-cigarettes/vaping use by our students and are aware of the connection and affect these have on physical and mental health and on learning. A key component is INCREASING protective factors and REDUCING risk factors in a student's life. As with other behavior expectations, our school teaches, reinforces, and corrects substance abuse prevention and follows the district substance abuse policy.

Substance abuse prevention learning	Consequences of violation	Substance abuse prevention resources
Botvin LST Targeted small groups with social worker/psychologist SafeUT training Coping skills in social and emotional learning lessons Choose Gang Free D.A.R.E.	Possession/Use: 1 st Offense Suspension, Quit course 2 nd Offense Alternative placement 3 rd Offense Prolonged alternative placement <hr/> Selling/Distributing: Alternative placement for 90 school days	For Parents: Marijuana Talk Kit Parents Empowered Partnership for Drug-Free Kids For Students: NIDA for Teens Above the Influence Just Think Twice For Educators: Foundation for a Drug-Free World Prevention Dimensions Curriculum NIDA Educator Resources

Section 5: SST and Tier II & III Interventions



An important part of our School Behavior Plan is the role of the Student Support Team (**SST**). The SST meets weekly and reviews applicable schoolwide student behavior and/or academic data in Educators Handbook, Gradebook, and Discovery as well as district provided reports such as the SHARP Survey to review the effectiveness of the School Behavior Plan and suggest modifications when needed. Administration regularly shares important behavior and misconduct data with teachers and staff.

The SST also works to identify students and/or groups of students who need additional levels of behavior supports and interventions. Below is a list of our Tier II (**Focused Supports**) and our Tier III (**Intensive Supports**) interventions.

Tier II Interventions	Tier III Interventions
<ul style="list-style-type: none"> -Behavior check-in/check-out -Social skills groups -Check and connect mentoring -Attendance check-in/check-out -Reteaching groups -Behavior contract -Structured recess contract -Break options 	<ul style="list-style-type: none"> -Behavior contract -504 accommodation -IEP -Functional Behavior Assessment (FBA) -Behavior Intervention Plan (BIP) -School-based counseling -Assigned para support (BHA) -Break options

Section 6: Communicating Plan

This plan is updated annually and made available on our website at the beginning of each school year and is also disseminated to patrons and school staff.

Patrons: [Facebook page](#)
[Community Council meetings](#)
[School webpage](#)
[Class Dojo](#)

Staff: [Staff training](#)
[Faculty meetings](#)
[New teacher meetings](#)
[Professional Learning Communities \(PLC\)](#)
[Positive Behavior Interventions and Supports \(PBIS\) meetings](#)

For more information or questions regarding our school behavior plan, please contact:

Monica Thayer- Principal | mthayer@graniteschools.org | 385-646-4866
Tyler Robinson - Social Worker | tmrobinson@graniteschools.org | 385-646-8837