



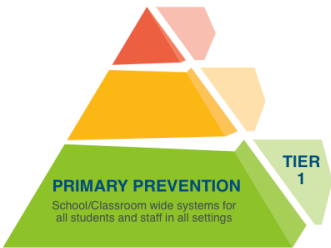
# Rolling Meadows Elementary

## 2022 - 2023 School Behavior Plan Summary

The purpose of this plan is to communicate our school's efforts to one, build and maintain a culture of positive student behavior; and two, to address the serious issues of bullying, suicide, and substance abuse prevention. This plan addresses state requirements found in: § 53G-9-602, § 53G-10-407, R277-400-8, R277-609-2, R277-622-3, and R277-609-4.

**District Commitment:** Every school in Granite School District will offer a learning environment where safety, responsibility, and respect prevail and where every student receives support toward achieving academic goals and personal aspirations.

### Section 1: Schoolwide Tier I Positive Behavior Expectations



Rolling Meadows Elementary uses Positive Behavior Interventions and Supports (PBIS), which is a district and state supported behavior program. As part of our PBIS, we proactively teach and reinforce these behavioral expectations to all students and staff and throughout all areas of the school.

### Respect - On-Task - Caring - KYHFOOTY

How/when expectations are <b>taught</b>	How expectations are <b>reinforced</b>	How behaviors are <b>corrected</b>
<ul style="list-style-type: none"> <li>- Orientation / School Walk-Around</li> <li>- 2nd Semester Review</li> <li>- Classroom &amp; Hallway Posters</li> <li>- Classroom Meeting Presentations</li> <li>- Assemblies</li> </ul>	<ul style="list-style-type: none"> <li>- Rockin' Rocket Tickets</li> <li>- Token Economy / School Store</li> <li>- Top Rocket of the Week</li> <li>- Quarterly "Good Behavior Parties"</li> <li>- Announcement Helpers</li> <li>- Leadership "Care Team" Nominations</li> <li>- Safety Patrol</li> </ul>	<ul style="list-style-type: none"> <li>Step 1: Reminder of Expectations</li> <li>Step 2: Reflection Form(s)</li> <li>Step 3: Think Time Form / Seat Away</li> <li>Step 4: Parent Contact</li> <li>Step 5: Office Referral</li> <li>Other: Restitution as needed, documentation in Educator's Handbook, and possible SST referral.</li> </ul>

Pro-social activities or programs that provide a positive extracurricular involvement for students:

- Care Team
- Safety Patrol
- Girls on the Run
- Band
- School Plays and Choir Performances

## Section 2: Bullying Prevention



Our school is committed to protecting students from all forms of bullying including cyber-bullying, hazing, and retaliation. Our students have the right to a safe, caring, and respectful learning environment in which all students can realize their maximum potential and fully engage in the learning process. Our goal is to raise awareness of bullying as an unacceptable form of behavior (*prevention*) and to have measures in place to deal with bullying behavior when it occurs (*intervention*).

Bullying Defined	Resources
<p>Bullying includes these three components and can include <b>bullying</b>, <b>cyber-bullying</b>, <b>hazing</b>, and <b>retaliation</b>:</p> <ol style="list-style-type: none"> <li>1. Unwanted or aggressive behavior involving a real or perceived power imbalance</li> <li>2. Intent to hurt, intimidate, humiliate, or cause harm - AND-</li> <li>3. The behavior is repeated or has significant potential to be repeated -OR- a single egregious event</li> </ol>	<p><a href="#">District Bully Prevention Information &amp; Resources</a>  <a href="#">What happens when bullying is reported?</a>  <a href="#">Stop Bullying Now</a>  <a href="#">Granite District Bullying and Hazing Policy</a>  <a href="#">SafeUT</a></p>

Teaching, reinforcing, and correcting our positive behavior expectations described in Section 1 are key components of our bully prevention plan. In addition to the schoolwide expectations, we have specific bully prevention practices that address bullying incidents and give support for students who have been targeted. Following is a summary of those practices:

How bullying prevention is taught	Steps taken when bullying is reported	School supports for targeted students
<ul style="list-style-type: none"> <li>- Assemblies</li> <li>- Social/Emotional Curriculum</li> <li>- Don't Stand By, Be An Ally</li> <li>- Stop, Walk, &amp; Talk Training</li> <li>- Internet Media Safety Lessons</li> </ul>	<ol style="list-style-type: none"> <li>1. Educator's Handbook Referral</li> <li>2. Administration/Counselor notified</li> <li>3. Incident investigated</li> <li>4. Meet with students individually</li> <li>5. Parents notified</li> <li>6. Next steps decided (restorative practices)</li> </ol>	<ul style="list-style-type: none"> <li>- Break Cards</li> <li>- Structured recess</li> <li>- Social Worker/Psych referral</li> <li>- BHA Support</li> <li>- Other interventions as necessary</li> </ul>

All reported incidents of bullying are taken seriously and are investigated by or in collaboration with a school administrator following the steps listed above. Incidents are documented on Educator's Handbook (our school's behavior tracking system) and/or on Discovery (our district's student information system).

When a teacher or other school personnel becomes aware of a bullying incident this information is promptly given to school administration. Additionally, we encourage anybody who is targeted by bullying, witnesses bullying, or is aware of bullying occurring to report it to a school administrator, a school counselor/teacher, other trusted adult, or by using the SafeUT app.

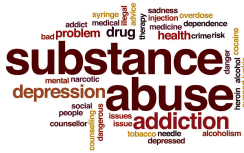
## Section 3: Suicide Prevention



Understanding the issues concerning suicide and mental health is an important way to take part in suicide prevention, help others in crisis, and change the conversation around suicide. In our school, age appropriate curriculum is used to teach students how to identify risk factors and warning signs of suicide, and how to help if they or someone they know may be thinking of self-harm. Reports of suicidal ideation are reported to administration to provide supports and communication to student and family. The Student Support referral and documentation process is followed.

How and when our school teaches suicide awareness	How our school responds to reports of suicidal ideation
<ul style="list-style-type: none"> <li>- Social Skills lessons (coping skills, stress management, emotional recognition and regulation skills, mindfulness, how to seek help)</li> <li>- Safe UT training &amp; review</li> </ul>	<ul style="list-style-type: none"> <li>- Meet with parent</li> <li>- Student Support Form completed</li> <li>- Outside resources provided</li> <li>- Restricting means and monitoring discussed</li> <li>- Referral to Social Worker/Psych as needed</li> <li>- Notify teacher to monitor student</li> <li>- District supports as needed</li> </ul>

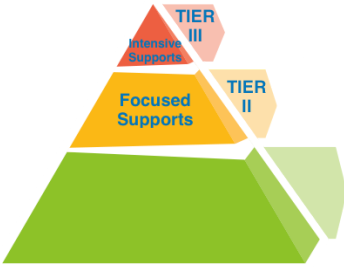
## Section 4: Substance Abuse Prevention



The Granite School District and Rolling Meadows Elementary are committed to the prevention of drug, alcohol, tobacco, and E-cigarettes/vaping use by our students and are aware of the connection and affect these have on physical and mental health and on learning. A key component is INCREASING protective factors and REDUCING risk factors in a student’s life. As with other behavior expectations, our school teaches, reinforces, and corrects substance abuse prevention and follows the district substance abuse policy.

Substance abuse prevention learning	Consequences of violation	Substance abuse prevention resources
<ul style="list-style-type: none"> <li>- Botvin LST</li> <li>- Social Skills presentations</li> <li>- Mindfulness</li> <li>- Coping Skills</li> <li>- Safe UT training</li> </ul>	<p><b>Possession/Use:</b>                      1<sup>st</sup> Offense   Suspension, Quit course                      2<sup>nd</sup> Offense   Alternative placement                      3<sup>rd</sup> Offense   Prolonged alternative placement</p> <hr/> <p><b>Selling/Distributing:</b>                      Alternative placement for 90 school days</p>	<p>For Parents: <a href="#">Marijuana Talk Kit</a>  <a href="#">Parents Empowered</a>  <a href="#">Partnership for Drug-Free Kids</a></p> <p>For Students: <a href="#">NIDA for Teens</a>  <a href="#">Above the Influence</a>  <a href="#">Just Think Twice</a></p> <p>For Educators: <a href="#">Foundation for a Drug-Free World</a>  <a href="#">Prevention Dimensions Curriculum</a>  <a href="#">NIDA Educator Resources</a></p>

## Section 5: SST and Tier II & III Interventions



An important part of our School Behavior Plan is the role of the Student Support Team (**SST**). The SST meets weekly and reviews applicable schoolwide student behavior and/or academic data in Educators Handbook, Gradebook, and Discovery as well as district provided reports such as the SHARP Survey to review the effectiveness of the School Behavior Plan and suggest modifications when needed. Administration regularly shares important behavior and misconduct data with teachers and staff.

The SST also works to identify students and/or groups of students who need additional levels of behavior supports and interventions. Below is a list of our Tier II (*Focused Supports*) and our Tier III (*Intensive Supports*) interventions.

Tier II Interventions	Tier III Interventions
<ul style="list-style-type: none"> <li>- Check-In/Check-Out</li> <li>- Small Social Skills Groups</li> <li>- Behavior Contracts</li> <li>- Reteaching expectations</li> </ul>	<ul style="list-style-type: none"> <li>- Individualized Behavior Contract</li> <li>- Individual Behavior Strategies</li> <li>- 504</li> <li>- IEP</li> <li>- School-Based Counseling</li> <li>- Referral to community wrap-around services</li> <li>- District BST Team</li> <li>- Assigned Para Assistance (BHA, Inclusion Para, BCBA)</li> </ul>

## Section 6: Communicating Plan

This plan is updated annually and made available on our website at the beginning of each school year and is also disseminated to patrons and school staff.

- Patrons:
- First Day Packets
  - Student Handbook
  - Parent Teacher Conferences
  - Community Council Meetings

- Staff:
- Staff & Student Handbooks
  - Teacher Trainings & Professional Development
  - Faculty Meetings
  - Email
  - PLCs
  - Webpage

For more information or questions regarding our school behavior plan, please contact:

Kait Heninger - Social Worker | [kkheninger@graniteschools.org](mailto:kkheninger@graniteschools.org) | 385-646-8202