



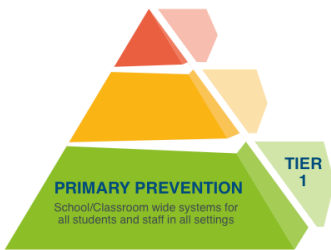
# Moss Elementary

## 2023 - 2024 School Behavior Plan Summary

The purpose of this plan is to communicate our school's efforts to one, build and maintain a culture of positive student behavior; and two, to address the serious issues of bullying, suicide, and substance abuse prevention. This plan addresses state requirements found in: § 53G-9-602, § 53G-10-407, R277-400-8, R277-609-2, R277-622-3, and R277-609-4.

**District Commitment:** Every school in Granite School District will offer a learning environment where safety, responsibility, and respect prevail and where every student receives support toward achieving academic goals and personal aspirations.

### Section 1: Schoolwide Tier I Positive Behavior Expectations



Moss Elementary uses Positive Behavior Interventions and Supports (PBIS), which is a district and state supported behavior program. As part of our PBIS we proactively teach and reinforce these behavioral expectations to all students and staff and throughout all areas of the school.

**Moss Manners-**  
**Communication**  
**Respect**  
**Responsibility**  
**Dependability**  
**Hard Work and Resilience**

| How/when expectations are <b>taught</b>  | How expectations are <b>reinforced</b>  | How behaviors are <b>corrected</b>  |
|--|---|---|
| <ul style="list-style-type: none"><li>* Schoolwide Expectations Rotation first week of school</li><li>* Classroom lessons first term</li><li>* Teacher led videos/reteaching lessons</li></ul> | <ul style="list-style-type: none"><li>* "Spot On" stickers</li><li>* Radical Roadrunner</li><li>* BUG lunch with assistant principal</li><li>* Brag Tags</li><li>* Classroom Moss Money rewards</li></ul> | <ul style="list-style-type: none"><li>* Reteach Expectations</li><li>* Resolve Conflicts using restorative practices (Peace Path)</li><li>* Decision Tree Steps</li><li>* Parent Meetings</li></ul> |

Pro-social activities or programs that provide a positive extracurricular involvement for students:

- \* Safety Patrol before and after school
- \* After School Program

## Section 2: Bullying Prevention



Our school is committed to protecting students from all forms of bullying including cyber-bullying, hazing, and retaliation. Our students have the right to a safe, caring, and respectful learning environment in which all students can realize their maximum potential and fully engage in the learning process. Our goal is to raise awareness of bullying as an unacceptable form of behavior (*prevention*) and to have measures in place to deal with bullying behavior when it occurs (*intervention*).

| Bullying Defined  | Resources  |
|---|--|
| Bullying includes these three components and can include <b>bullying</b> , <b>cyber-bullying</b> , <b>hazing</b> , and <b>retaliation</b> : <ol style="list-style-type: none"><li>1. Unwanted or aggressive behavior involving a real or perceived power imbalance</li><li>2. Intent to hurt, intimidate, humiliate, or cause harm - AND-</li><li>3. The behavior is repeated or has significant potential to be repeated -OR- a single egregious event</li></ol> | <a href="#">District Bully Prevention Information &amp; Resources</a><br><a href="#">What happens when bullying is reported?</a><br><a href="#">Stop Bullying Now</a><br><a href="#">Granite District Bullying and Hazing Policy</a><br><a href="#">SafeUT</a> |

Teaching, reinforcing, and correcting our positive behavior expectations described in Section 1 are key components of our bully prevention plan. In addition to the schoolwide expectations, we have specific bully prevention practices that address bullying incidents and give support for students who have been targeted. Following is a summary of those practices:

| How bullying prevention is taught   | Steps taken when bullying is reported   | School supports for targeted students  |
|---|---|--|
| *Stop, Walk, and Talk Training<br>*Mind Up Curriculum<br>*Social/Emotional Learning Curriculum<br>*Second Step Bully Prevention | 1. Administration/counselor notified<br>2. Incident Investigated<br>3. Meet with students individually<br>4. Parents notified<br>5. Next steps decided (Peace Path) | * Mindfulness Center Breaks<br>* Individual Counseling<br>* Group Counseling<br>* Social Worker referral<br>* Making amends<br>* Behavior Contract |

All reported incidents of bullying are taken seriously and are investigated by or in collaboration with a school administrator following the steps listed above. Incidents are documented on Educator's Handbook (our school's behavior tracking system) and/or on Discovery (our district's student information system).

When a teacher or other school personnel becomes aware of a bullying incident this information is promptly given to school administration. Additionally, we encourage anybody who is targeted by bullying, witnesses bullying, or is aware of bullying occurring to report it to a school administrator, a school counselor/teacher, other trusted adult, or by using the SafeUT app.

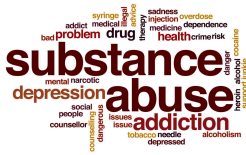
### Section 3: Suicide Prevention



Understanding the issues concerning suicide and mental health is an important way to take part in suicide prevention, help others in crisis, and change the conversation around suicide. In our school, age appropriate curriculum is used to teach students how to identify risk factors and warning signs of suicide, and how to help if they or someone they know may be thinking of self-harm. Reports of suicidal ideation are reported to administration to provide supports and communication to student and family. The Student Support referral and documentation process is followed.

| How and when our school teaches suicide awareness  | How our school responds to reports of suicidal ideation   |
|--|---|
| <ul style="list-style-type: none"> <li>*Social Emotional Learning Curriculum</li> <li>*Safe UT presentation (5th Grade)</li> </ul> | <ul style="list-style-type: none"> <li>*Referral to Social Worker</li> <li>*Resources given to parents</li> <li>*Parent/Student Meetings</li> </ul> |

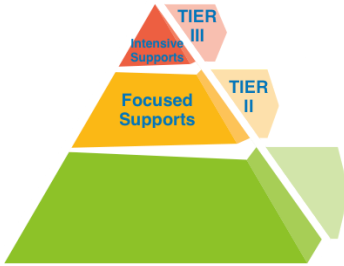
### Section 4: Substance Abuse Prevention



The Granite School District and Moss Elementary are committed to the prevention of drug, alcohol, tobacco, and E-cigarettes/vaping use by our students and are aware of the connection and affect these have on physical and mental health and on learning. A key component is INCREASING protective factors and REDUCING risk factors in a student's life. As with other behavior expectations, our school teaches, reinforces, and corrects substance abuse prevention and follows the district substance abuse policy.

| Substance abuse prevention learning   | Consequences of violation   | Substance abuse prevention resources   |
|---|---|--|
| <ul style="list-style-type: none"> <li>*Social Emotional Learning Curriculum</li> <li>*Safe UT presentation</li> <li>*Botvin LST (5th Grade)</li> </ul> | <p><b>Possession/Use:</b><br/>           1<sup>st</sup> Offense   Suspension<br/>           2<sup>nd</sup> Offense   3-day suspension<br/>           3<sup>rd</sup> Offense   alternative placement</p> <hr/> <p><b>Selling/Distributing:</b><br/>           Alternative placement for 90 school days</p> | <p>For Parents: <a href="#">Marijuana Talk Kit</a><br/> <a href="#">Parents Empowered</a><br/> <a href="#">Partnership for Drug-Free Kids</a></p> <p>For Students: <a href="#">NIDA for Teens</a><br/> <a href="#">Above the Influence</a><br/> <a href="#">Just Think Twice</a></p> <p>For Educators: <a href="#">Foundation for a Drug-Free World</a><br/> <a href="#">Prevention Dimensions Curriculum</a><br/> <a href="#">NIDA Educator Resources</a></p> |

## Section 5: SST and Tier II & III Interventions



An important part of our School Behavior Plan is the role of the Student Support Team (**SST**). The SST meets weekly and reviews applicable schoolwide student behavior and/or academic data in Educators Handbook and Focus, as well as district provided reports such as the Panorama Survey to review the effectiveness of the School Behavior Plan and suggest modifications when needed. Administration regularly shares important behavior and misconduct data with teachers and staff.

The SST also works to identify students and/or groups of students who need additional levels of behavior supports and interventions. Below is a list of our Tier II (**Focused Supports**) and our Tier III (**Intensive Supports**) interventions.

| Tier II Interventions  | Tier III Interventions  |
|--|---|
| <ul style="list-style-type: none"><li>* Check In/Check Out</li><li>* Social Skills Groups</li><li>* Attendance monitoring and reinforcement</li><li>* Emotion Regulation Groups</li><li>* Behavior Contracts</li></ul> | <ul style="list-style-type: none"><li>*Behavior Contracts</li><li>*Individual Behavior Intervention Plans</li><li>*504</li><li>*IEP</li><li>*School based counseling (social worker or psychologist)</li><li>*Behavior Health Aide services</li></ul> |

## Section 6: Communicating Plan

This plan is updated annually and made available on our website at the beginning of each school year and is also disseminated to patrons and school staff.

Patrons: 

- \*School Website
- \*District Website
- \*Community Council meetings

Staff: 

- \*Teacher Training
- \*Faculty Meeting

For more information or questions regarding our school behavior plan, please contact:

Lindsay Adams - Principal | lwadams@graniteschools.org | 385-646-4933