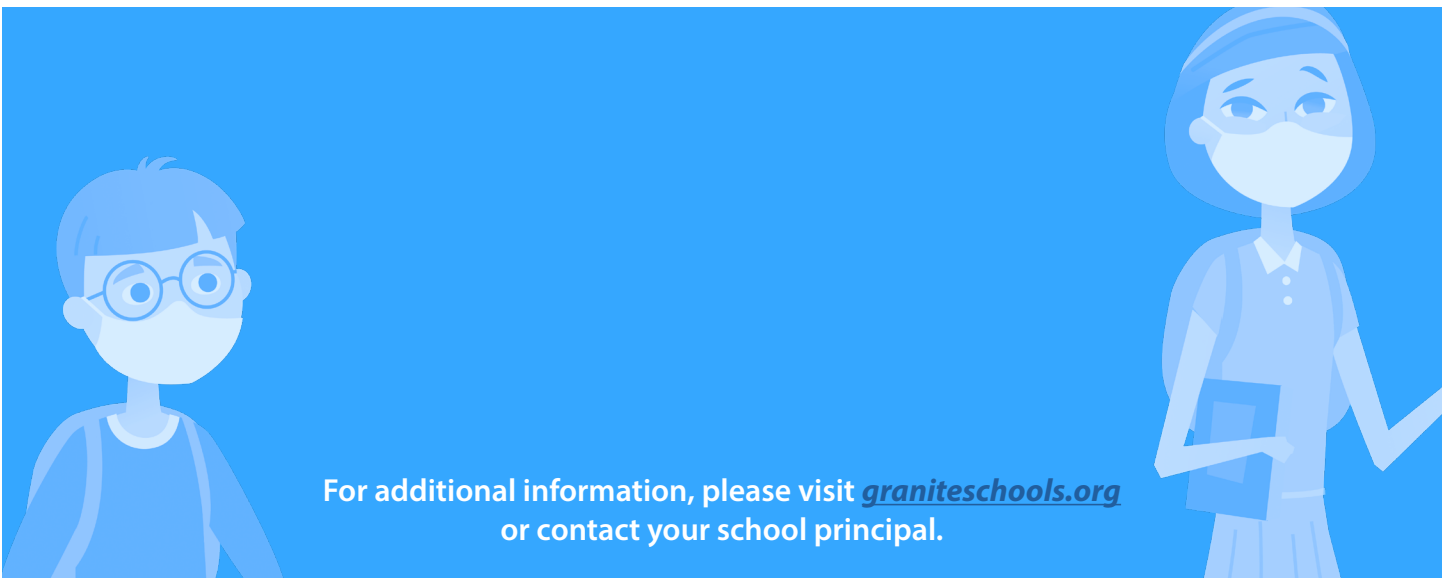




# COVID-19

## Parent and Guardian Information

*August 2020*



# STUDENTS WITH SYMPTOMS MUST STAY HOME



## PARENTS SHOULD:

- Check their child for symptoms of COVID-19 **every day before school**.
- Take their child's temperature every day before school. If they have a temperature of 100.4° F (38° C) or higher, the child has a fever. If parents do not have a thermometer, they can check their child's skin to see if it's warm or is red, or ask if they have chills or are sweaty.
- Follow quarantine guidance if their child or anyone who lives in their home has been exposed to someone with COVID-19.
- Ensure emergency contact information is up to date with the school.

*Absences due to a COVID-19 diagnosis or quarantine will **NOT** result in penalties, and absences for other illness can be excused.*

## STUDENTS SHOULD:

- Tell their parents or teacher if they feel sick or have any symptoms of COVID-19.

## SYMPTOMS OF COVID-19:

- Fever (temperature of 100.4° F (38° C) or higher, or feeling feverish with chills)
- Cough
- Shortness of breath
- Decrease in sense of taste or smell
- Sore throat
- Muscle aches and pains

**COVID-19 testing locations can be found at:**

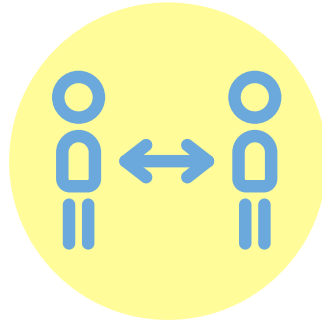
<https://coronavirus.utah.gov/testing-locations/>

# Four Healthy Behaviors to Prevent COVID-19



## WASH HANDS

for 20 seconds with soap and water, especially after blowing your nose, coughing, sneezing, going to the restroom, making or eating food, before and after school, caring for someone, or putting on or taking off a face covering.



## PHYSICALLY DISTANCE

COVID-19 is mainly spread by close contact. The rule of thumb is 6 feet away from those who do not live in your home, but that's not always easy at school. Stay away as far as you can. Any distance between people can help.



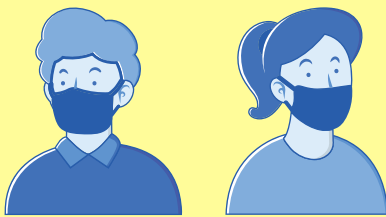
## WEAR A MASK

Cloth face coverings reduce the spread of COVID-19, especially when both people who may come into close contact are wearing a face covering. Remember you still should physically distance as much as possible while wearing a mask.



## STAY HOME IF SICK

Students, teachers, and employees should not go to school or work if they are feeling sick. They should stay home until they are feeling better. Contact a health provider to know when it is okay to return to work or school.



## Utah Public Health Order on Face Coverings

In compliance with the Governor's Executive Order, Granite School District **requires students to wear face coverings** while attending in-person school and school sanctioned events to the extent required by applicable federal, state, or local laws, regulations, ordinances, emergency orders, or state/local school board action. Except in very limited circumstances, face coverings must be worn **even when an individual is able to physically distance from others**. [Read FAQs on Utah Public Health Order](#)

A face covering is a cloth covering that covers both the nose and the mouth. A cloth face covering:



- is made of synthetic or natural fabrics;
- secures under the chin;
- fits snugly against the nose and sides of the face;
- must not have see-through openings that allow a view of the nose or mouth; and
- does not have an exhalation valve or vent.



**Face shields** - clear plastic coverings that secure around the top of the head - may be worn **in addition to a cloth face covering**, or as an accommodation for students with special healthcare needs, or in situations where the ability to see the mouth is essential for communication, such as speech therapy. Please contact your principal or 504 coordinator to discuss specific accommodations.

## FACE COVERING EXCEPTIONS

In accordance with the public health order, students are exempt from wearing a face covering when actively engaging in:

- Elementary school outdoor recess **IF students are able to maintain appropriate physical distancing**
- A school-sponsored activity or physical education class if the individual cannot reasonably participate while wearing a cloth face covering (e.g., a student athlete playing a match outdoors, [a student playing a musical instrument](#), etc.)

If a student refuses to wear a face covering while at school (and does not have an qualifying, authorized exemption), school administration will work with the student's parent or guardian to provide distance learning.

# What Happens if a Student or Staff Member Tests Positive for COVID-19?



If a student, teacher, or employee test positive for COVID-19, they will be asked to isolate right away. This means the person needs to stay at home and away from other people as much as possible. The student or employee will not be allowed to return to school/work until the isolation period is complete.

**Isolation lasts until symptoms improve, the individual has been fever-free for 24 hours without medicine, AND it has been at least 10 days since they first had symptoms or tested positive. Students, teachers, and employees should not go to school or work until the health department has said they are done with isolation.**

People who have been in close contact with someone who tests positive for COVID-19 are at an increased risk of getting infected and infecting others. Close contact means someone was closer than 6 feet or 2 meters (about 2 arm lengths) to a person who has COVID-19 for 15 minutes or longer.



## CONTACT TRACING IN SCHOOLS

The school nurse works with the health department on contact tracing, which is how health workers find the close contacts of someone who has COVID-19. Once this occurs, the school nurse will work with the health department to notify students, parents, teachers, and employees if they were exposed to COVID-19 at school.

## WHAT'S THE DIFFERENCE BETWEEN ISOLATION AND QUARANTINE?

Quarantine is for people who may have been exposed to COVID-19, but aren't sick yet. Isolation is for people who are sick, have symptoms of COVID-19 or have tested positive for COVID-19.



## QUARANTINE

Quarantine keeps you away from others so you don't infect someone else without knowing it. Symptoms of COVID-19 may appear 2-14 days after exposure. Students will be required to quarantine for 14 days if they were exposed to COVID-19. This means you were in close contact with someone who has COVID-19. Close contact means you were closer than 6 feet from someone who has the virus for 15 minutes or more.

Parents need to check their child for symptoms of COVID-19 every day during the 14-day quarantine. If they get sick or develop symptoms of COVID-19 during quarantine, parents should call a healthcare provider or the Salt Lake County Public Health Hotline (385-468-4636) and get their child tested for COVID-19. Testing locations can be found at <https://coronavirus.utah.gov/testing-locations/>. Even if the student or employee never gets sick or tests negative, they must finish the 14-day quarantine.

## OUTBREAK CRITERIA [\(Refer to pp. 93-96 of the COVID-19 School Manual\)](#)

Outbreaks can happen in one area (like a classroom) or extend more widely (like a school or district)

### 1 case in a classroom is not considered an outbreak

- Only individuals who were in close contact will be notified and required to quarantine at home for the designated 14 days
- Enhanced cleaning will take place

### 2 cases in a classroom within a 2 week or 14-day period puts a classroom on alert for heightened awareness

- Students and parents within the class will be notified of the situation and asked to take extra precautions, including a reminder to stay home if feeling sick
- Only individuals who were in close contact will be notified and required to quarantine at home for the designated 14 days
- Enhanced cleaning will take place

### 3 cases in a classroom within a 2 week or 14-day period is considered an outbreak

- Everyone will need to quarantine for 14 days at home from the date of last exposure.
- The school will clean the classroom per guidelines established by the health department

### 15 cases in a school or 10% of the student population within a 2 week or 14-day period is considered an outbreak

- The whole school will need to quarantine for 14 days at home from the date of last exposure
- The whole school will be cleaned per guidelines established by the health department

## District Closure

If multiple schools are quarantined the local health department, in collaboration with Granite School District leadership, will make this decision on a case by case basis.

# I Think My Student had Direct Exposure to COVID-19, What Should I Do?

